



NIAGARA

**General Catalogue
Catálogo General
Catalogue général**



NIAGARA

FUTURE INTELLIGENT PUMPS



North America:

Head Office, Canada:

- 📍 Address: 4 Laurier Ave, Milton, Postal Code: L9T4V2, Ontario, Canada.
- ☎️ Tel: +1 (514) 550 5578
- ✉️ Email: sales@niagarapumps.ca

USA:

- 📍 Address: 8450 Cambridge street zip code 77054 Houston Texas.
- ☎️ Tel: +1 (713) 363 1585
- ✉️ Email: usa@niagarapumps.ca



Europe:

Sweden:

- 📍 Address: Lisa sass Gatan 12 Gothenburg – Sweden.
- ☎️ Tel: +4 (670) 099 1626
- ✉️ Email: sweden@niagarapumps.ca

Turkey:

- 📍 Address: FATIH MAH URFALILAR CAD, NO 9A, Esenyurt, Istanbul-Turkey.
- ☎️ Tel: +9 (537) 523 9069
- ✉️ Email: turkey@niagarapumps.ca



Middle East:

- 📍 Address: Liwara 1, Shaikh Rashid Bin Humaid St. Ajman, UAE
- ☎️ Tel: +9 (715) 5269 3552
- ✉️ Email: uae@niagarapumps.ca

WQV

n ≈ 3500/1750 rpm



Vortex cutting submersible pump
Vórtice bomba sumergible de corte
Pompe submersible de coupe Vortex

DESCRIPTION/DESCRIPCIONES/DESCRIPTION

- New cutting submersible sewage pumps design
- Equipped with vortex alloy impeller with 48HR(hardness)
- Better hydraulic characteristics
- Pump case in heavy gauge robust cast iron HT250
- Casing resistant to abrasion and long-lasting
- Discharge port with bolts,nuts and gaskets
- Quality bearing, wear resistance mechanical seal

- Nuevo diseño de bombas sumergibles corte para aguas residuales
- Equipado con impulsor de aleación vortex con 48HR (dureza)
- Mejores características hidráulicas
- Caja de bomba en hierro fundido robusto de gran calibre HT250
- Carcasa resistente a la abrasión y duradera.
- Puerto de descarga con pernos, tuercas y empalmes
- Rodamiento de calidad y cierre mecánico personalizado

- Nouvelle conception de pompes submersibles coupe pour eaux usées
- Équipé d'une roue en alliage vortex avec 48HR (dureté)
- Meilleures caractéristiques hydrauliques
- Carter de pompe en fonte robuste de fort calibre HT250
- Boîtier résistant à l'abrasion et durable
- Orifice de décharge avec boulons, écrous et joints
- Roulement qualité, joint mécanique de résistance à l'usure

USING LIMITS/LÍMITES UTILIZACIÓN/UTILISATION LIMITES

- Temperature of the liquid to +40 °C
- 10m maximum immersion depth
- Solids passage: from 25mm to 65mm
- Temperatura del líquido a +40 °C
- 10m de profundidad de inmersión máxima
- Paso de sólidos: de 25 mm a 65 mm
- Température du liquide à +40 °C
- Profondeur d'immersion maximale de 10m
- Passage des solides: de 25 mm à 65 mm

MODEL CODE/CÓDIGO MODELO/CODE MODÈLE

For example/Par ejemplo/Par exemple

50 WQV 12 - 10 - 1.1 D

- 50=Discharge size(mm)
Tamaño de descarga (mm)
Taille de décharge (mm)
- WQV=Vortex cutting submersible pump
Vórtice bomba sumergible de corte
Pompe submersible de coupe Vortex
- 12=Nominal flow (m³/h)
Caudal nominal (m³/h)
Débit nominal (m³/h)
- 10=Nominal Head(m)
Altura nominal (m)
Tête nominale (m)
- 1.1=Rated power(kw)
Potencia nominal(kw)
Puissance nominale(kw)
- D=Singlephase/Monofásico/Monophasé
Blank=Three phase
Blanco=Trifásico
Blanc=Triphasé

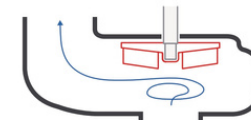


TECHNICAL DATA/DATOS TÉCNICOS/DONNÉES TECHNIQUES

60 Hz n≈3500/1750 1/min

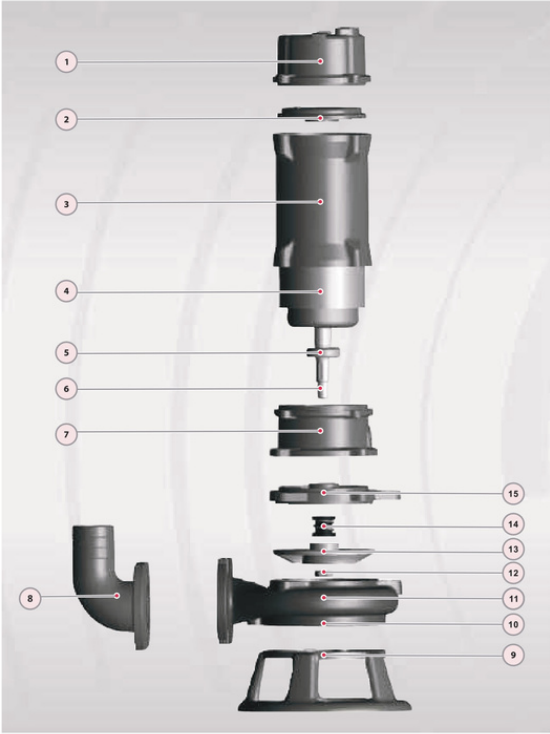
MODEL/MODELO/MODÈLE		Power/Potencia/Puissance		Rated Q	Rated H	RPM	DN	Max Solid	KGS	DIM
Single-phase Monofásico/Monophasé	Three-phase Trifásico/Triphasé	kW	hp	m ³ /h	m		mm	mm		cm
40WQV10-10-0.75D	40WQV10-10-0.75	0.75	1	10	10	3500	40	25	22.5	48*20*22
40WQV12-10-1.1D	40WQV12-10-1.1	1.1	1.5	12	10	3500	40	25	23.7	48*20*22
50WQV10-10-0.75D	50WQV10-10-0.75	0.75	1	10	10	3500	50	25	22.5	48*20*22
50WQV12-10-1.1D	50WQV12-10-1.1	1.1	1.5	12	10	3500	50	25	23.7	48*20*22
50WQV15-15-1.5D	50WQV15-15-1.5	1.5	2	15	15	3500	50	25	36.5	60*27*25
-	50WQV9-22-2.2	2.2	3	9	22	3500	50	25	40.1	61*29*29
-	65WQV25-15-2.2	2.2	3	25	15	3500	65	25	41.4	61*29*29
-	80WQV45-9-2.2	2.2	3	45	9	3500	80	30	43.4	61*29*29
-	50WQV20-22-3	3	4	20	22	3500	50	25	45.8	63*26*30
-	65WQV35-15-3	3	4	35	15	3500	65	25	46.6	63*26*30
-	80WQV43-13-3	3	4	43	13	3500	80	30	47.4	63*26*30
-	65WQV25-22-4	4	5.5	25	22	3500	65	25	52.2	64*29*32
-	80WQV45-17-4	4	5.5	45	17	3500	80	30	52.9	64*29*32
-	80WQV30-25-4	4	5.5	30	25	3500	80	30	53.5	64*29*32
-	80WQV45-20-5.5	5.5	7.5	45	20	3500	80	30	62.5	73*29*34
-	100WQV65-15-5.5	5.5	7.5	65	15	3500	100	35	63.6	73*29*34
-	80WQV45-22-7.5	7.5	10	45	22	3500	80	30	72	73*31*35
-	100WQV100-13-7.5	7.5	10	100	13	3500	100	35	73.5	73*31*35
-	100WQV80-25-11	11	15	80	25	1750	100	40	187	96*53*44
-	150WQV150-15-11	11	15	150	15	1750	150	45	201	101*52*42
-	100WQV80-30-15	15	20	80	30	1750	100	40	208	100*53*44
-	150WQV200-15-15	15	20	200	15	1750	150	45	222	105*52*42
-	150WQV250-15-18.5	18.5	25	250	15	1750	150	45	286	115*57*44
-	200WQV350-12-18.5	18.5	25	350	12	1750	200	50	294	120*58*46
-	150WQV300-15-22	22	30	300	15	1750	150	45	307	125*57*44
-	200WQV400-10-22	22	30	400	10	1750	200	55	324	120*58*46
-	200WQV350-15-30	30	40	350	15	1750	200	55	440	135*57*67
-	250WQV600-10-30	30	40	600	10	1750	250	65	440	140*60*67

IMPELLER TYPE/TIPO DE IMPULSOR/TYPE ROUE



VORTEX

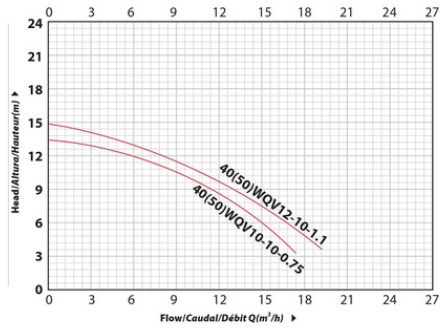
MATERIAL DESCRIPTION/DESCRIPCIÓN DE MATERIAL/DESCRIPTION DU MATÉRIEL



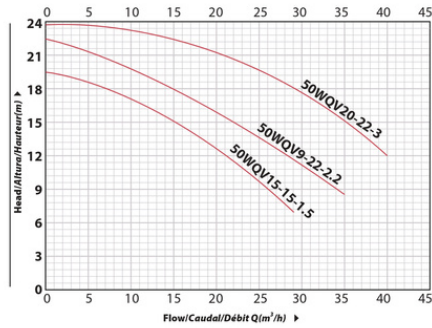
No.	Description Descripción Description	Material Material Matériel
1	Motor cover Tapa de motor Capot moteur	Cast iron Fundición Fonte
2	Plate Plato Assiette	Cast iron Fundición Fonte
3	Motor Case Cuerpo de Motor Boîtier du moteur	Cast iron Fundición Fonte
4	Wound Stator/Rotor Estator/Rotor Stator/Rotor de blessure	Silicon Steel/Copper Silicio-Cobre Silicium-Cuivre
5	Bearing Rodamiento Palier	Ball Bearing Bola Rodamiento Palier Balle
6	Shaft Eje Arbre	S5304-45# Steel Inox 304-Hierro Inox304-Acier
7	Chamber Sala Chambre	Cast iron Fundición Fonte
8	Output flange Brida de salida Bride de sortie	Cast iron Fundición Fonte
9	Base Base Base	Cast iron Fundición Fonte
10	Cutter plate Placa de corte Plaque de coupe	Alloy 48HR Aleación 48HR Alliage 48HR
11	Pump Case Cuerpo de Bomba Boîtier de pompe	Cast iron Fundición Fonte
12	Impeller Nut Nuez Noix	Galvanized Steel Acero Galvanizado Acier Galvanisé
13	Impeller Impulsor Roue	Alloy 48HR Aleación 48HR Alliage 48HR
14	Mechanical Seal Cierre Mecánico Sceller	SiC/Carbon/S5304 SiC/Grafito/Inox304 SiC/Carbon/Inox304
15	Seal plate Plato sello Plaque d'étanchéité	Cast iron Fundición Fonte

PERFORMANCE CURVE/CURVA DE RENDIMIENTO/COURBE DE PERFORMANCE

60 Hz n=3500 l/min

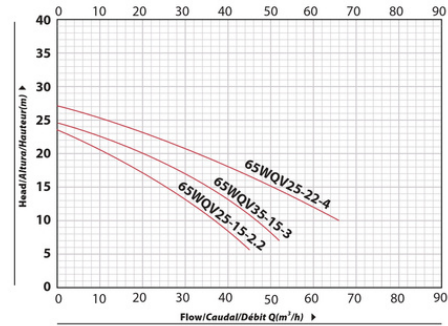


60 Hz n=3500 l/min

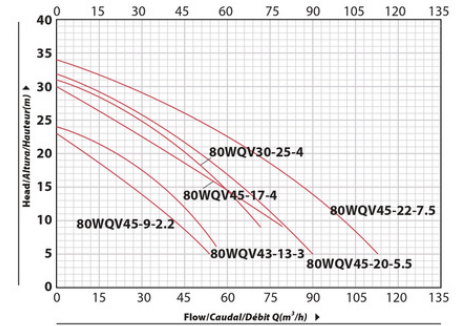


PERFORMANCE CURVE/CURVA DE RENDIMIENTO/COURBE DE PERFORMANCE

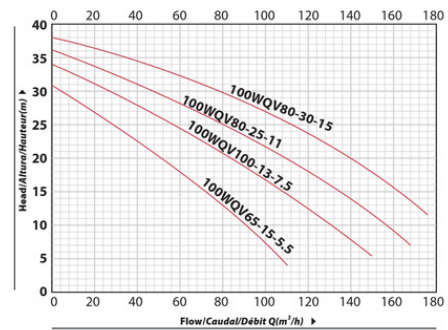
60 Hz n=3500 l/min



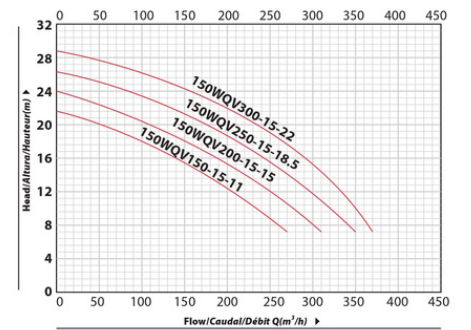
60 Hz n=3500 l/min



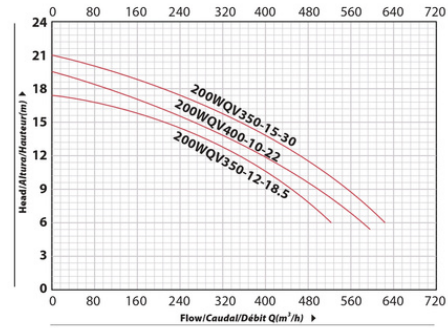
60 Hz n=3500/1750 l/min



60 Hz n=1750 l/min



60 Hz n=1750 l/min



60 Hz n=1750 l/min

